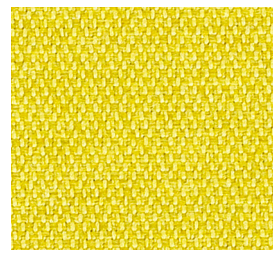




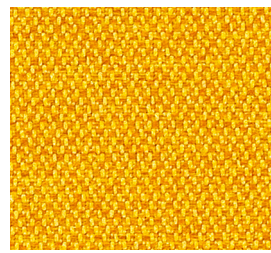
Infinity
Pantone® Color Collection



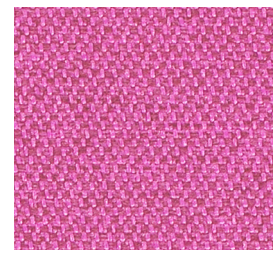
Vanilla



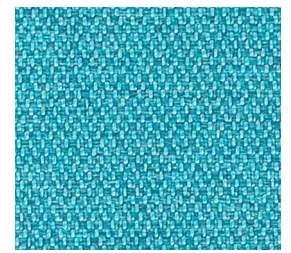
Lemongrass



Maize



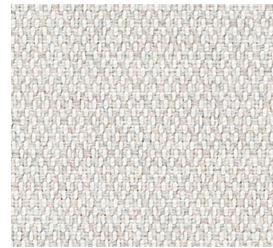
Radiant



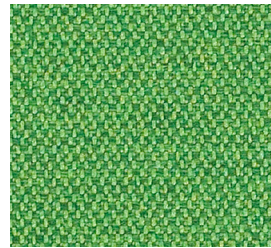
Rinse



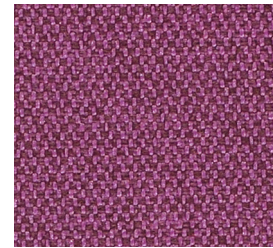
Barley



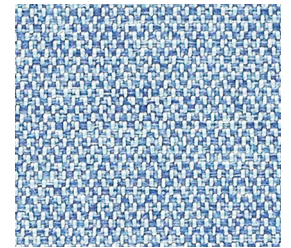
Stucco



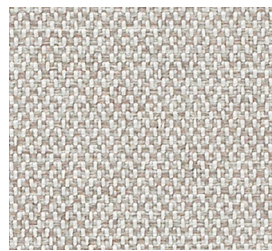
Links



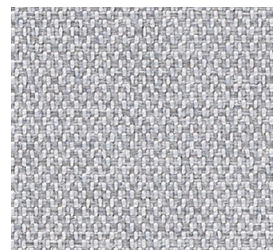
Tyrian



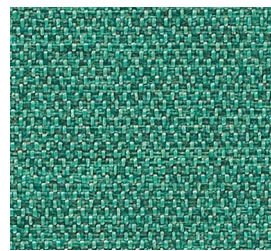
Aster



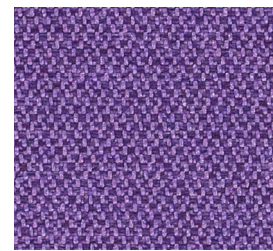
Dove



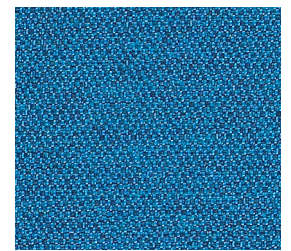
Aluminum



Atoll



Hyacinth



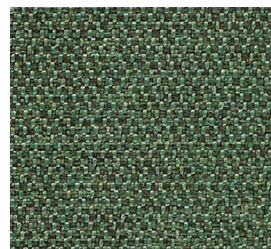
Capri



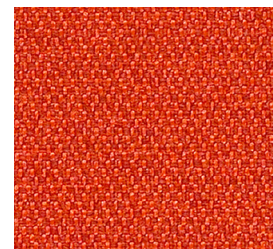
Pumice



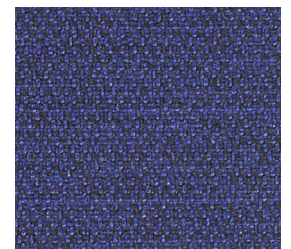
Gull



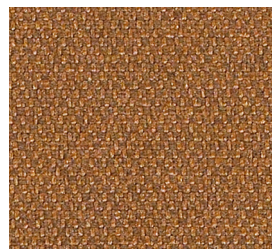
Vine



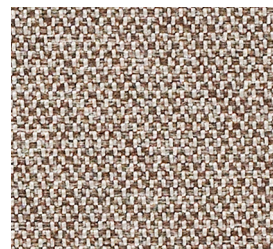
Papaya



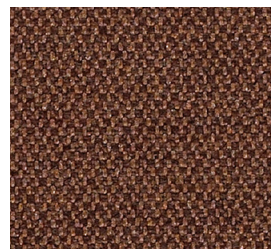
Beyond



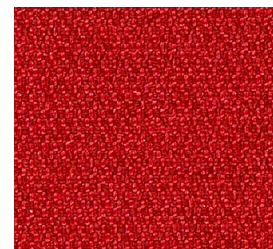
Russet



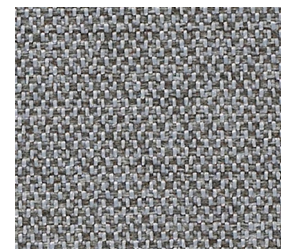
Sable



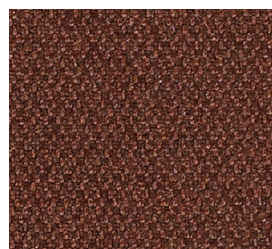
Terrain



Macintosh



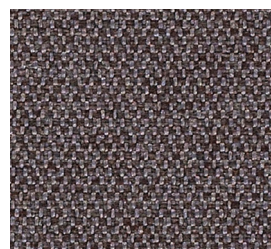
Pewter



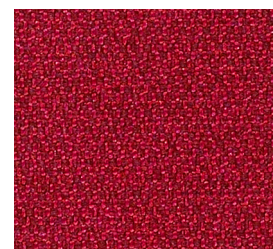
Umber



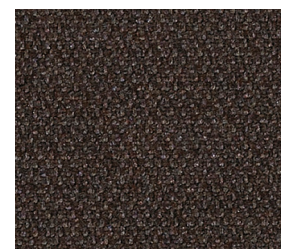
Java



Graphite




Berry



Eclipse

Infinity

Pantone® Color Collection

Application:	Upholstery
Content:	74% Post Consumer Recycled Polyester, 26% Polyester
Backing:	Acrylic
Finish:	Soil & Stain Resistant
Flame Resistance:	CA 117 2013, UFAC Class I, NFPA 260 Class I, ASTM E84; With proper components, compatible with CA 133
Durability:	200,000 double rubs
Maintenance:	WS - Water-based cleaning agents or foam
Width:	57"
Repeat:	1/8"L x 5/8"W
Shown Railroaded:	No
Lightfastness:	40 hours Class 4
Weight:	0.82 lbs
Dye:	Piece
	
©2014	

To receive a Pantone® Color Collection card which includes all 5 patterns and 150 skus. please contact customer service at customerservice@momtexas.com

Multiple factors affect fabric durability and appearance retention. including end-user application and proper maintenance. Wyzenbeek results above 100,000 double rubs have not been shown to be a reliable indicator of increased fabric lifespan.

REDUCED ENVIRONMENTAL IMPACT:

- GREENGUARD Gold Certified
- Meets or exceeds ACT Sustainability Standard NSF/ANSI 336 compliance requirements
- Recycled Fiber Content



memosamples.com | 800.366.6839

MOMENTUM
TEXTILES & WALLCOVERING