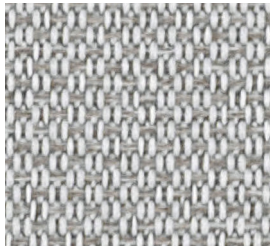


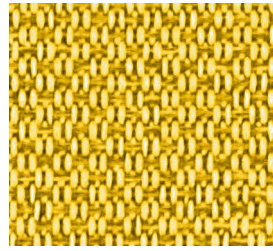


MOMENTUM
TEXTILES & WALLCOVERING

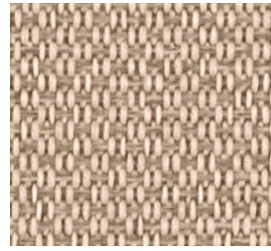
Marathon
Pantone® Color Collection



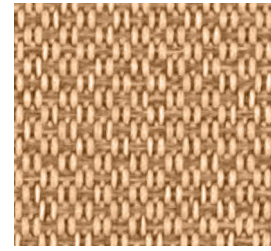
Tint



Pollen



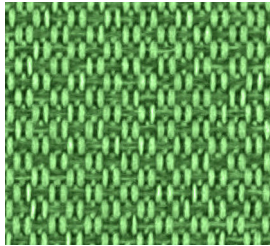
Flax



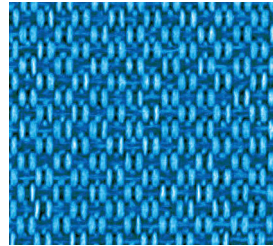
Curry



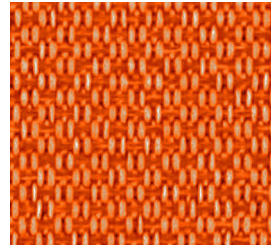
Oats



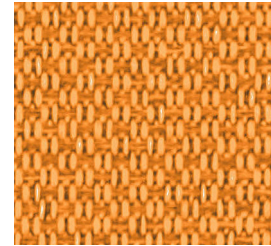
Sprite



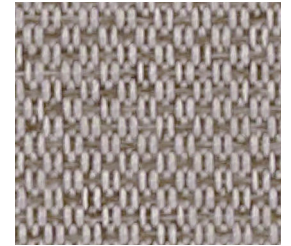
Cyan



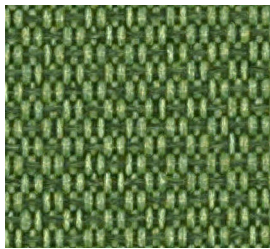
Alert



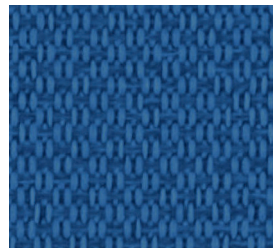
Marigold



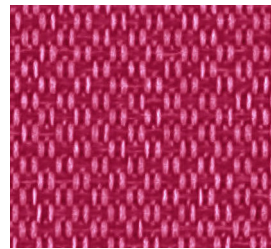
Ridge



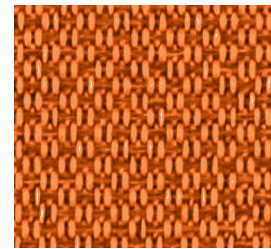
Foliage



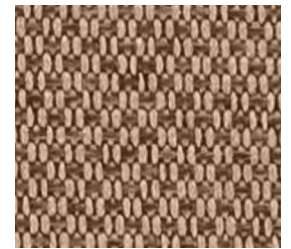
Fluorite



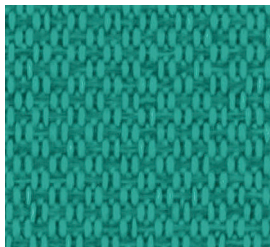
Vivacious



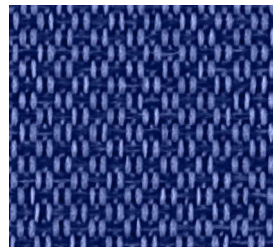
Lantern



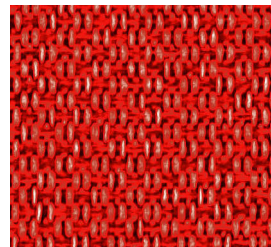
Wren



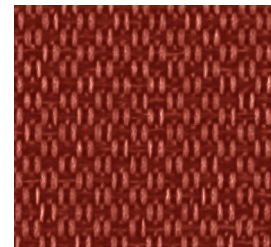
Oz



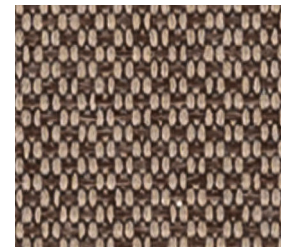
Deep



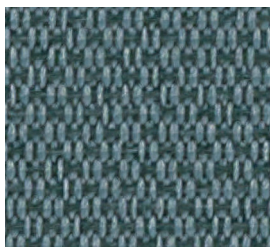
Chili



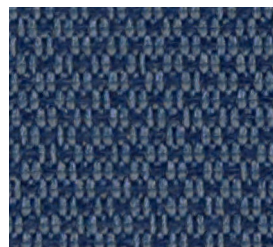
Sunset



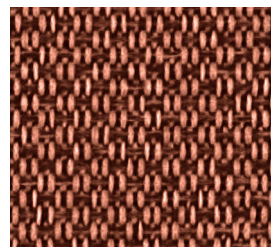
Caravel



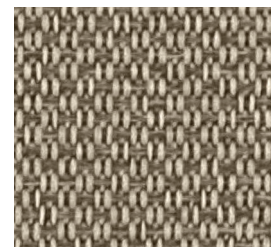
Rain



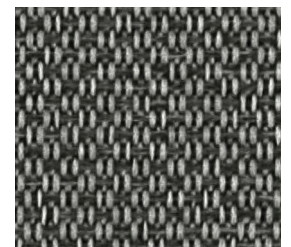
Toile



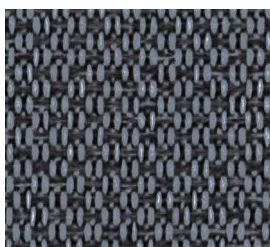
Clay



Herb



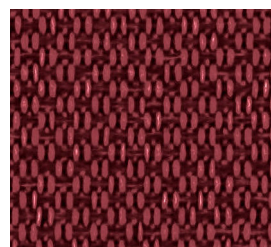
Arbor



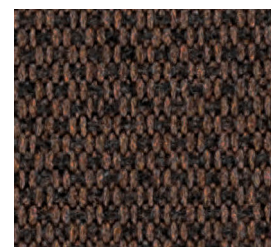
Storm



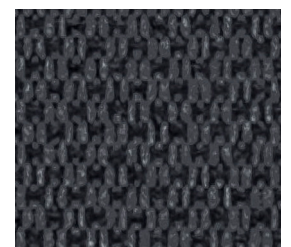
Violet



Pinot




Clove



Noir

Marathon

Pantone® Color Collection

Application:	Upholstery
Content:	75% Post Consumer Recycled Polyester, 25% Polyester
Backing:	Acrylic
Finish:	Soil & Stain Resistant
Flame Resistance:	CA I 17 2013, UFAC Class I. NFPA 260 Class I. ASTM E84; With proper components, compatible with CA 133
Durability:	200,000 double rubs
Maintenance:	WS - Water-based cleaning agents or foam
Width:	57"
Repeat:	1/8"L x 1/8"W
Shown Railroaded:	No
Lightfastness:	40 hours Class 4
Weight:	0.82 lbs
Dye:	Piece
	
©2014	

To receive a Pantone® Color Collection card which includes all 5 patterns and 150 skus. please contact customer service at customerservice@momtux.com

Multiple factors affect fabric durability and appearance retention. including end-user application and proper maintenance. Wyzenbeek results above 100,000 double rubs have not been shown to be a reliable indicator of increased fabric lifespan.

REDUCED ENVIRONMENTAL IMPACT:

- GREENGUARD Gold Certified
- Meets or exceeds ACT Sustainability Standard NSF/ANSI 336 compliance requirements
- Recycled Fiber Content



memosamples.com | 800.366.6839

MOMENTUM
TEXTILES & WALLCOVERING