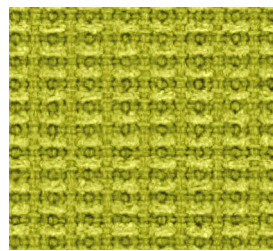
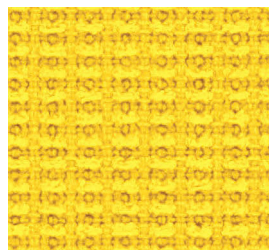


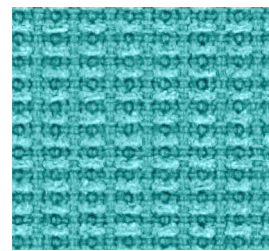
Clean



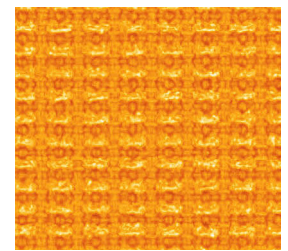
Electric



Spark



Pool



Nector



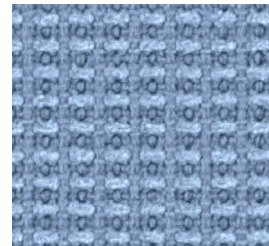
Steel



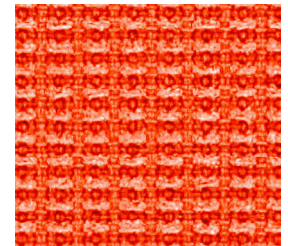
Plateau



Crisp



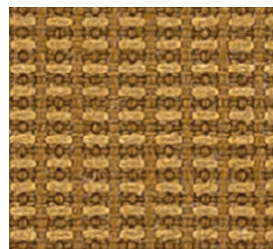
Cascade



Aglow



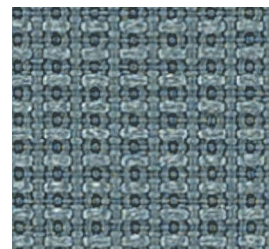
Zinc



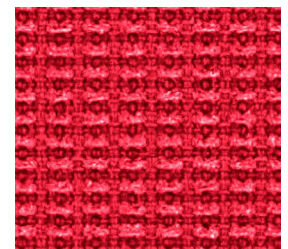
Pyrite



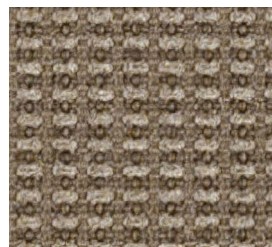
Peridot



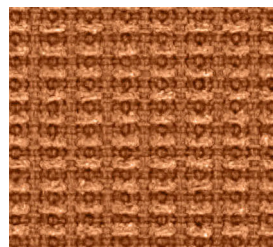
Voyage



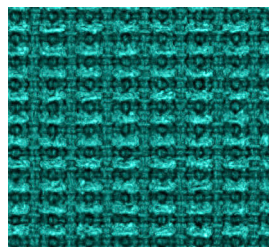
Thrill



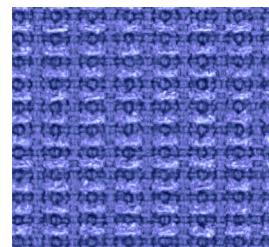
Safari



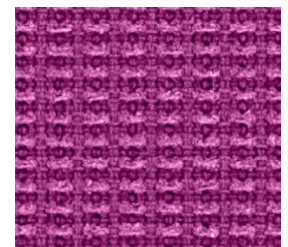
Amber



Lush



Tanzanite



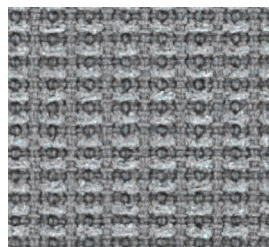
Orchid



Monument



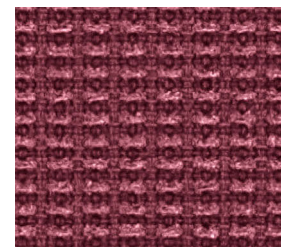
Copper



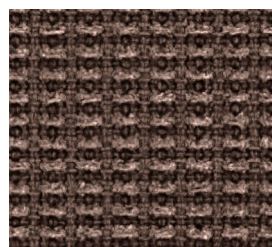
Anchor



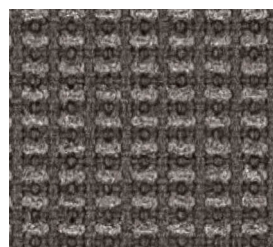
Coastal



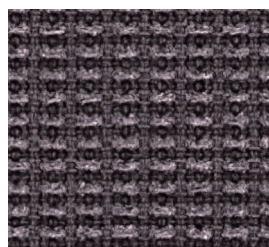
Cerise



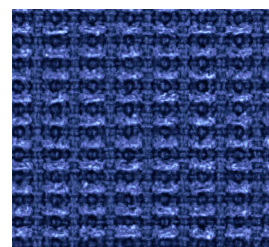
Mocha



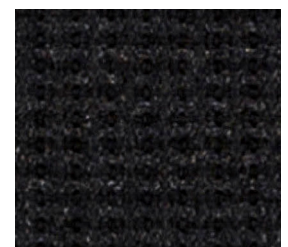
Cavern



Geode




Sapphire



Onyx

Millennium

Pantone® Color Collection

Application:	Upholstery
Content:	85% Post Consumer Recycled Polyester, 15% Polyester
Backing:	Acrylic
Finish:	Soil & Stain Resistant
Flame Resistance:	CAI 17 2013, UFAC Class I, NFPA 260 Class I, ASTM E84; With proper components, compatible with CAI 33
Durability:	200,000 double rubs
Maintenance:	WS - Water-based cleaning agents or foam
Width:	56"
Repeat:	1/8"L x 1/8"W
Shown Railroaded:	No
Lightfastness:	40 hours Class 4
Weight:	0.82 lbs
Dye:	Piece
	
©2014	

To receive a Pantone® Color Collection card which includes all 5 patterns and 150 skus. please contact customer service at customerservice@momtux.com

Multiple factors affect fabric durability and appearance retention. including end-user application and proper maintenance. Wyzenbeek results above 100,000 double rubs have not been shown to be a reliable indicator of increased fabric lifespan.

REDUCED ENVIRONMENTAL IMPACT:

- GREENGUARD Gold Certified
- Meets or exceeds ACT Sustainability Standard NSF/ANSI 336 compliance requirements
- Recycled Fiber Content



memosamples.com | 800.366.6839

MOMENTUM
TEXTILES & WALLCOVERING