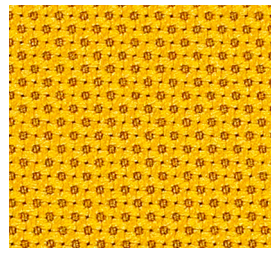
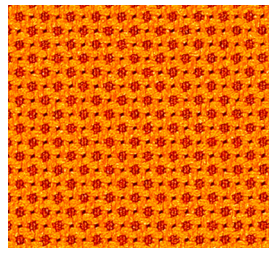


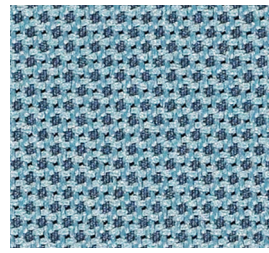
Skim



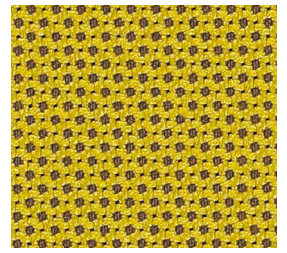
Dijon



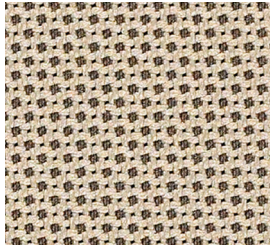
Lively



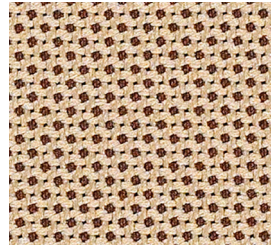
Inlet



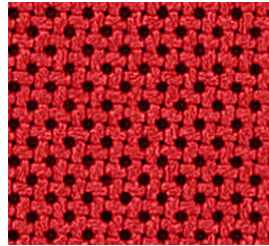
Smith



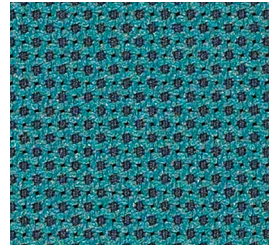
Linen



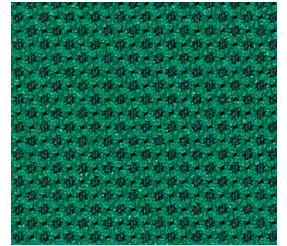
Craft



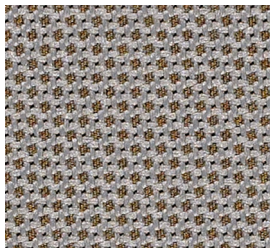
Amp



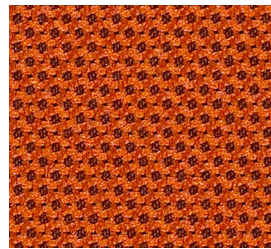
Cruise



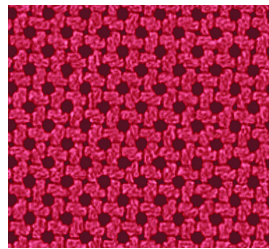
Emerald



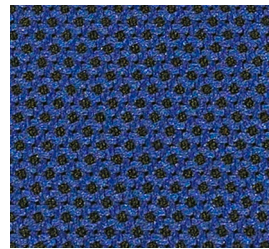
Breeze



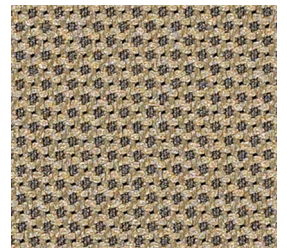
Western



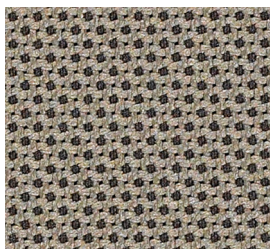
Kiss



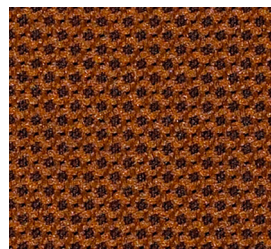
Primary



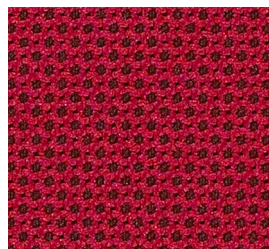
Oliver



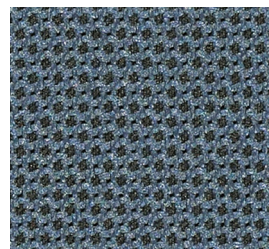
Nettle



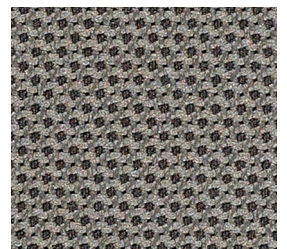
Cedar



Sangria



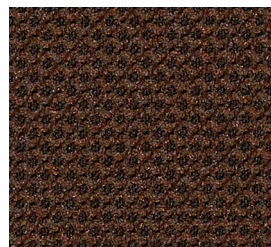
Maritime



Rue



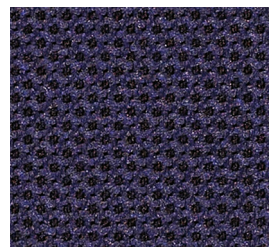
Tinge



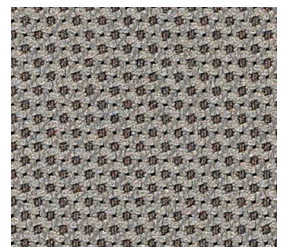
Roast



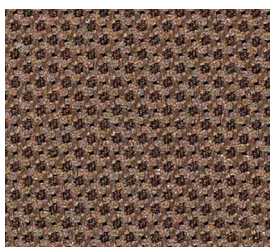
Ink



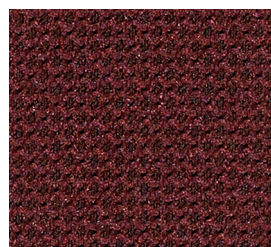
Captain



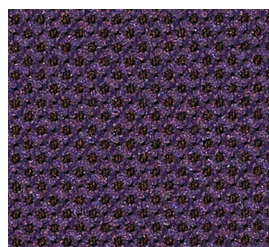
Alloy



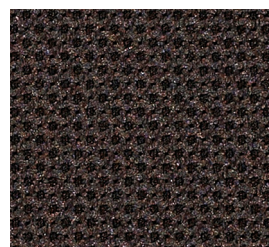
Fossil



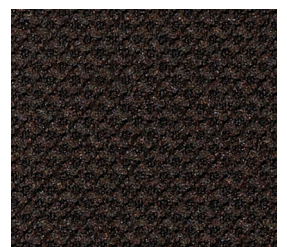
Eggplant



Iris



Carbon



Opaque

Odyssey

Pantone® Color Collection

Application:	Upholstery
Content:	67% Post Consumer Recycled Polyester, 33% Polyester
Backing:	Acrylic
Finish:	Soil & Stain Resistant
Flame Resistance:	CA 117 2013, UFAC Class I, NFPA 260 Class I, ASTM E84; With proper components, compatible with CA 133
Durability:	200,000 double rubs
Maintenance:	WS - Water-based cleaning agents or foam
Width:	56"
Repeat:	1/8"L x 1/8"W
Shown Railroaded:	No
Lightfastness:	40 hours Class 4
Weight:	1.10 lbs
Dye:	Piece



©2014

To receive a Pantone® Color Collection card which includes all 5 patterns and 150 skus. please contact customer service at customerservice@momtux.com

Multiple factors affect fabric durability and appearance retention. including end-user application and proper maintenance. Wyzenbeek results above 100,000 double rubs have not been shown to be a reliable indicator of increased fabric lifespan.

REDUCED ENVIRONMENTAL IMPACT:

- GREENGUARD Gold Certified
- Meets or exceeds ACT Sustainability Standard NSF/ANSI 336 compliance requirements
- Recycled Fiber Content



memosamples.com | 800.366.6839

MOMENTUM
TEXTILES & WALLCOVERING