

Panaz

Luxe Performance Velvet



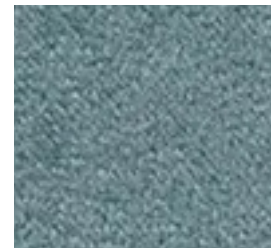
192 Ink



215 Elm



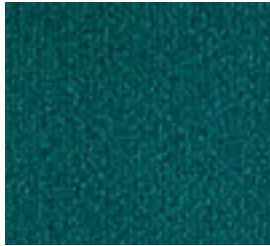
648 Fig



134 Sky



906 Ash



151 Teal



905 Dove



919 Zinc



226 Lime



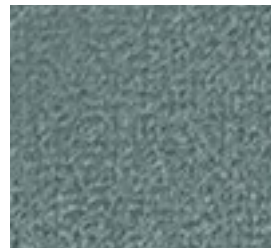
300 Gold



609 Rose



703 Mink



108 Delph



618 Blush



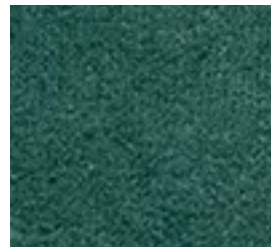
837 Stone



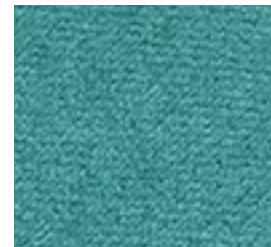
900 Black



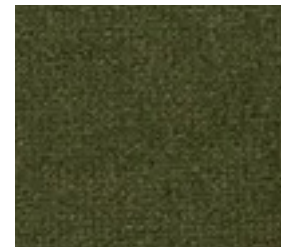
117 Royal



129 Ocean



131 Azure



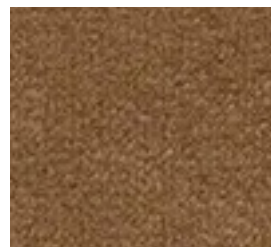
231 Olive



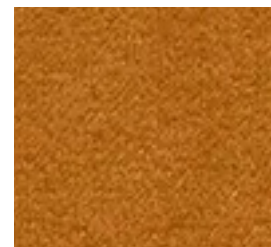
646 Peony



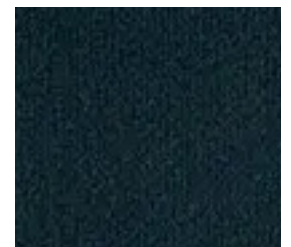
805 Cream



806 Camel



824 Ochre



105 Indigo

Panaz

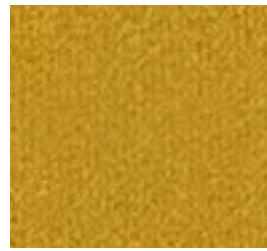
Luxe Performance Velvet



209 Wasabi



211 Spruce



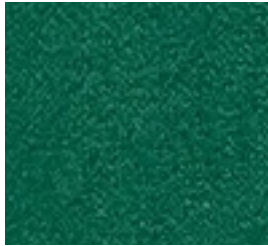
238 Citrus



252 Willow



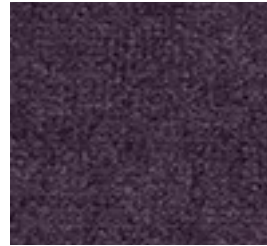
104 Cobalt



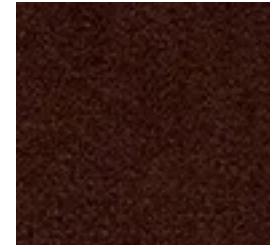
229 Forest



242 Laurel



412 Purple



481 Damson



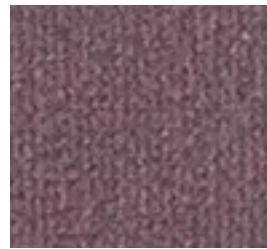
904 Pewter



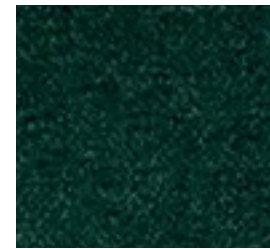
111 Peacock



271 Celadon



642 Thistle



203 Emerald



219 Seafoam



823 Chablis



447 Cinnamon



467 Bordeaux



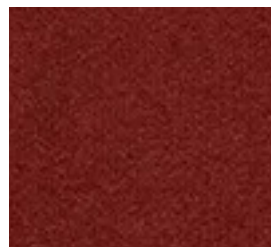
954 Graphite



424 Vermilion



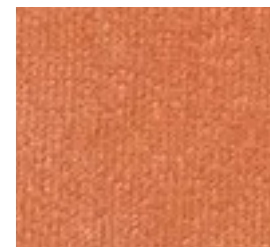
408 Terracotta



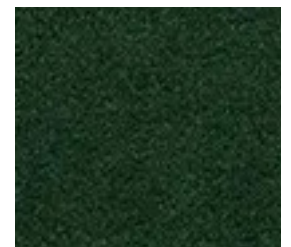
437 Tuscan Red



574 Dark Coral



637 Soft Peach



228 Bottle Green



Luxe Performance Velvet

TECHNICAL SPECIFICATION

Flammability Ratings: BS 5852 IGN Source 5, BS 7176 Medium Hazard, BS EN 1021 1/2, CAL TB 117, IMO FTP CODE 2010 Part 8, NFPA 260

Product Type: Velvet

End Use: Cushions, Upholstery

Sector: Cruise, Healthcare, Hospitality

Material: Fire Retardant, Polyester

Pattern Type: Plain

Width: Standard Width

Width (cm): 140

Weight (g/m²): 452

Martindale Scale: 60,001 – 80,000

Martindale Abrasion: 70,000

Wyzenbeek Scale: 0 – 50,000

Wyzenbeek DR: 50,000

Technical Features: Antimicrobial, Breathable, ShieldPlus, Stain Resistant, Waterproof

FR Territories: Cruise, UK, USA

Composition: 100% Polyester with Microporous Film and FR Laminate

Panaz

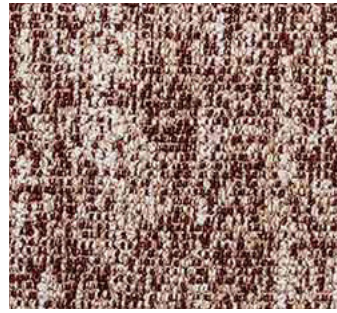
Shelby



192 Ink



116 Navy



414 Wine



806 Camel



837 Stone



193 Petrol



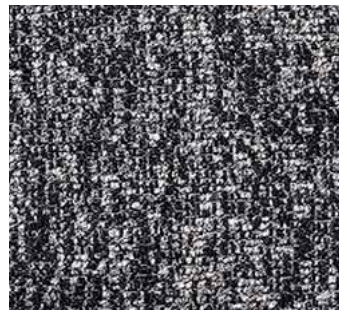
229 Forest



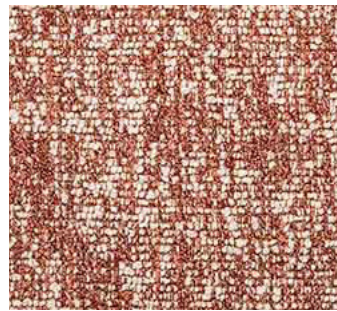
901 Silver



219 Seafoam



903 Charcoal



574 Dark Coral



705 Cappuccino



824 Ochre



971 Nickel

Panaz

Shelby

TECHNICAL SPECIFICATION

Flammability Ratings:	BS 5852 IGN Source 5, BS 7176 Medium Hazard, BS EN 1021 1/2, IMO FTP CODE 2010 Part 8, NFPA 260
Product Type:	Woven
End Use:	Upholstery
Sector:	Cruise, Hospitality
Material:	Fire Retardant, Polyester
Pattern Type:	Plain
Width:	Standard Width
Width (cm):	140
Weight (g/m²):	760
Martindale Scale:	40,001 – 50,000
Martindale Abrasion:	50,000
Wyzenbeek Scale:	50,001 – 100,000
Wyzenbeek DR:	70,000
FR Territories:	Cruise, UK, USA
Colour Fastness:	Light Fastness: 6+
Composition:	100% Polyester with FR Backcoating